

Merlin's Revenge 2 List of Enemies

Goblin archer:
 Health: low
 Attack: weak,
 Shoots arrow
 Speed: medium
 Difficulty: easy



Goblin hut; spawns goblins:



Goblin builder:
 Health: low
 Attack: none until they are done with building their huts.
 Speed: Medium
 Difficulty: easy
 Special: can construct goblin huts to spawn goblins. After it's done it can shoot arrows the goblin archer.

Skeleton warrior:
 Health: low medium
 Attack: low medium,
 Sword
 Speed: medium
 Difficulty: easy



Skeleton Grave: spawns skeletons.

Spiders:
 Health: low medium
 Attack: low medium,
 Shoots laser
 Speed: fast
 Difficulty: easy medium



Spider spawner: cocoon

Orc
 Health: Medium
 Attack: Low
 Crossbow, 3 bolts at a time
 Speed: Medium
 Difficulty: medium-easy
 Special: must squat to fire



Orc Barracks

Rock Monster
 Health: medium high
 Attack: medium
 Rock throw
 Speed: low
 Difficulty: medium

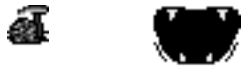


boulder cave

Ghost
 Health: medium
 Attack: medium low
 Spell
 Speed: medium slow
 Difficulty: medium
 Special: can summon skeletons,
 Can only be summoned by necromancers (see below)



Fang bunny baby
 Heath: low
 Attack: little higher than medium
 Shoots particles with its fangs
 Speed: medium low
 Difficulty: medium low



fang bunny portal

Fang bunny
 Heath: medium low
 Attack: little higher than medium
 Fangs
 Speed: medium low
 Difficulty: medium



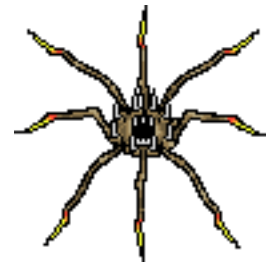
Hydra 1 head
 Heath: medium low
 Attack: medium low
 Acid spit
 Speed: medium low
 Difficulty: medium easy



Hydra 2 heads
 Heath: medium
 Attack: medium
 2 bites
 Speed: medium low
 Difficulty: medium



Hydra 3 heads
 Heath: medium high
 Attack: high
 3 bites
 Speed: medium low
 Difficulty: medium hard
 Special: no hydras can be spawned, heads drop off 1 by 1 as the hydra takes damage



Pit monster
 Heath: low
 Attack: high
 Springs out of the ground and hit with spikes
 Speed: can't move but can get out of ground fast
 Difficulty: If you see it right away: easy if you step on it: medium hard
 Special: can't be spawned, attacks other monsters

pit monster in ground

Pit monster above ground

Lizard soldiers
 Heath: medium
 Attack: low
 Throws egg which spawns 3 bugs (see below)
 Speed: medium
 Difficulty: medium easy
 Special: can't be spawned



Bug 🐛
Health: low
Attack: low
Run into Merlin
Speed: medium high
Difficulty: easy



sumo crack

Sumo
Health: medium low
Attack: medium high
Jumps into the air and lands making a large crack
Difficulty: medium
Special: can't be spawned

Dragon
Health: high
Attack: medium
Flame thrower
Difficulty: medium high
Special: can't be spawned



Necromancer:
Health: medium
Attack: medium low
Summon spell
Difficulty: medium high
Special: summons ghosts, can't be spawned



Black Orc
Health: high
Attack: 1 hit and you are wasted, so, very high
Huge axe
Difficulty: high
Special: can't be summoned or spawned only 2 in the game

Scarlet wizard:
Health: medium
Attack: high (energy blast) and medium low (monster summon)
Energy blast and monster summon
Difficulty: high
Special: can't be summoned or spawned, can summon necromancers

